

Candle Filter – 1 Micron Filtration

Cutting & Grinding Coolant Filtration System

FLUID FILTRATION



Distributed By:

MSC FILTRATION TECHNOLOGIES

Corporate Offices & Distribution Center

MSC Filtration Technologies
198 Freshwater Blvd.
Enfield, Connecticut 06082
Ph: 800-237-7359 | (860)745-7475
Fax: (860) 745-7477

Email: sales@mscfiltertech.com
Web: www.mscfiltertech.com



Features:

- Each candle-like filter element is composed of thousands of thin wafers and compressed tightly by a spring. When dirty fluid passes through the tiny gaps between wafers, all particles over one micron are trapped on the outside edge of the filter elements.
- Automatically cleaned by a rapid backwash cycle. Uses air to blow out particles trapped on elements and then deposits them into a sludge collecting basket.
- Equipped with oil suction and filtration device in the sludge basket. Therefore, dry sludge is easy to collect and sell.
- The replaceable filter element lasts several years. (When used with recommended oils.)

Applications:

- Carbide Tool and Cutter Grinding
- Electrical Discharge Machine (EDM)
- Honing
- Precision Grinding

Maximum Recommended Oil Viscosity:

- Grinding – under 45 SUS
- EDM – under 37 SUS

Filter Precision: 1 Micron



The Candle Filter's sludge bin is conveniently located behind an easy-to-access side panel, allowing for hassle-free cleaning and maintenance.

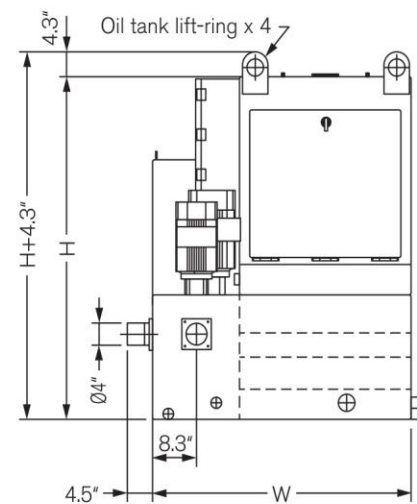
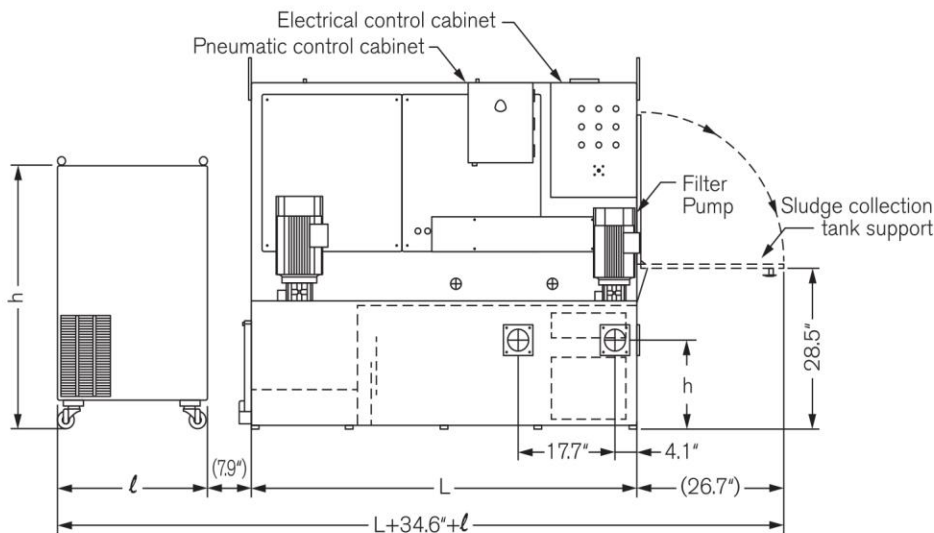
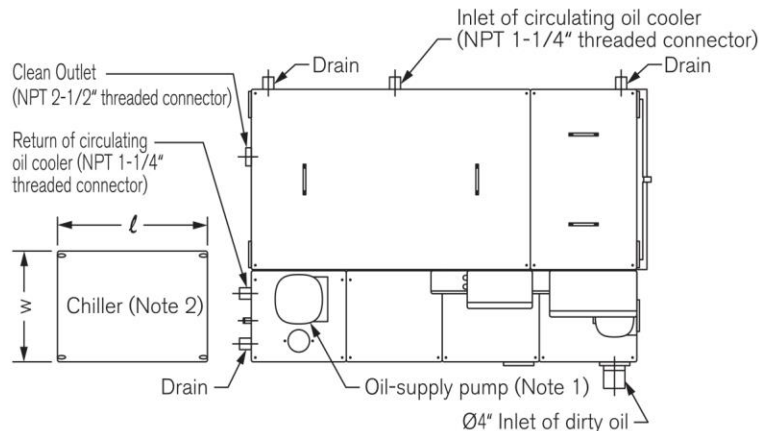
PRAB

a **MSC** Global company

Specifications:

MODEL	VESSEL NO.	L	W	H	DIRTY INLET (h)	TANK VOL (GAL)	FLOW RATE CLEAN OIL GPM	CHILLER (TON)	CHILLER DIMENSION L x w x h
CF4T-1R	1	52.8	41.8	60.8	11.8	170	13	1	21.6x18.9x40.9
CF4T-1	1	52.8	41.8	60.8	11.8	170	18	2	27.4x19.4x46.3
CFT-1	1	52.8	48.0	60.8	15.8	210	20	2	27.4x19.4x46.3
CFT-1S	1	70.9	48.0	60.8	15.8	285	30	3	23.6x36.2x49.0
CF7T-1	1	60.0	60.0	60.8	15.8	285	42	3	23.6x36.2x49.0
CF7T-1S	1	60.0	60.0	60.8	15.8	285	56	4	43.5x27.8x55.0
CFT-2	2	70.9	48.0	60.8	15.8	285	42	3	23.6x36.2x49.0
CFT-3	3	96.0	48.0	60.8	15.8	380	60	4	43.5x27.8x55.0
CFT-4	4	120.0	48.0	60.8	15.8	485	80	5	43.5x27.8x55.0

- Note: 1. Customer-defined oil supply pump, pressure changes with viscosity.
 2. Oil cooler is optional, 1 Ton = 12,000 BTUs.
 3. Dirty oil extraction device is optional.
 4. Dimensions shown are in inches.



Recommended Oil:

GRINDING OIL		
MODEL	VISCOSITY	FLASH T.
CROWN CUT 850	43 SUS@ 100°F	266°F
Sintogrid TT	45 SUS@ 100°F	320°F
Castrol 488 CF	45 SUS@ 100°F	230°F
Castrol Honilo 980	43 SUS@ 100°F	250°F
OMNI-Grind V	37 SUS@ 100°F	239°F
Norpar 15	33 SUS@ 100°F	240°F
Emol-O-Grind 168/3	45 SUS@ 100°F	266°F

EDM OIL		
MODEL	VISCOSITY	FLASH T.
Castrol SE 180	37 SUS@ 100°F	212°F
US-1	36 SUS@ 70°F	240°F
US-2	32 SUS@ 77°F	165°F
US-3	34 SUS@ 77°F	210°F
Interlyte	37 SUS@ 72°F	220°F
Iono Plus	37 SUS@ 77°F	225°F
Commonwealth 259T	37 SUS@ 72°F	259°F
Commonwealth 244	37 SUS@ 72°F	244°F

Note: Water in the oil will deteriorate the oil quality, reduce flow rate and damage filter elements.

Distributed By:



Corporate Offices & Distribution Center

MSC Filtration Technologies
 198 Freshwater Blvd.
 Enfield, Connecticut 06082
 Ph: 800-237-7359 | (860)745-7475
 Fax: (860) 745-7477

Email: sales@mscfiltrtech.com
 Web: www.mscfiltrtech.com



A Global company