

Fulflo® FH5 Filter Vessels

- Carbon Steel
- 304 Stainless Steel
- 316 Stainless Steel

Multi-Cartridge Filter Vessel Series

FH5 Filter Vessels Feature Patented Safety Latch Design

Fulflo® FH5 Cartridge Non-Code Filter Vessels are lightweight and provide economical filtration of liquids. A patented* safety-latch design prevents inadvertent separation of the head from the shell in the event of improper venting prior to clamp removal.

The FH5 Vessel Series accommodates either double-open-end (DOE) or single open-end (SOE) filter cartridges in 10 in, 20 in and 30 in lengths.

Applications

- Potable Water
- Process Water
- Edible Oils
- Coatings
- Lubricants
- Coolants
- Cutting Oils
- Solvents



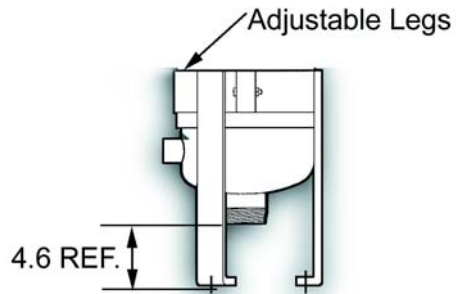
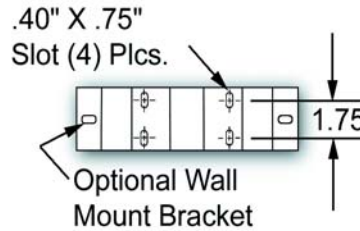
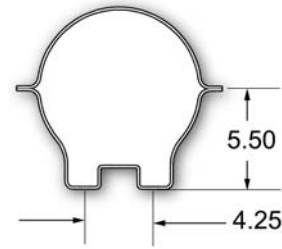
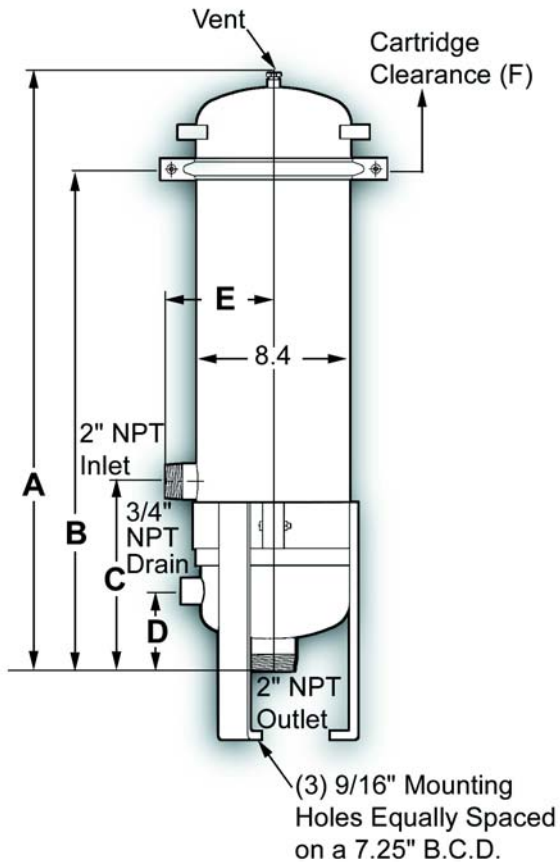
Features and Benefits

- Split-shell construction with V-band clamp permits easy cleaning and cartridge change out.
- Maximum design pressure is 100 psig (6.9 bar) at 200°F (94°C).
- Threaded vent and drain connections.
- Dual purpose cartridge seats for use with double open end and 2-222 O-ring single open end cartridges.
- Air vent, drain plug, leg assembly and optional wall bracket available.
- The shell O-ring is Buna-N, Butyl, Viton** and EPR elastomer O-rings available.
- Side inlet; cover opens without disconnecting piping.

Process Filtration Division



Multi-Cartridge Filter Vessel Series



Design Specifications

Models Iron & Steel	No. & Length of Cartridges (in)	Aqueous Flow (gpm)	Dimensions (in)		C	D	E	F	Shipping Weight (lbs)
			A	B					
FH-510	(5) 10	25	22.06	16.88	9.69	4.75	4.95	4.95	45
FH-520	(5) 20	50	32.19	26.94	9.69	4.75	5.00	5.00	55
FH-530	(5) 30	75	42.25	37	9.69	4.75	5.00	5.00	65

- Rated liquid capacity based on initial pressure drop of 3 psi (0.2 bar) with a 20µm cotton wound depth cartridge and fluid viscosity of water. Steel models are furnished as follows: Standard models—stainless steel internals and iron pipe plug for vent and drains: FH SS = 304 SS construction with 316 SS internals and 304 vent plug. 6FH SS = 316 SS construction with 316 SS internals and vent plug.
- Actual flow rate is dependent on fluid viscosity, micron rating, contaminant and media type.

Ordering Information

FH	SS	5	20	L
Design Series	Material	Number of Columns	Cartridge Length (in)	Options
	No Symbol = Carbon Steel		10	L = Legs
	SS = 304 SS		20	W = Wall Mount
	6SS = 316 SS		30	P = Plain

Process Filtration Division

* U.S. Patent No. 4,660,779
 ** A trademark of E. I. du Pont de Nemours & Co.

Parker Hannifin Corporation
 Process Filtration Division
 6640 Intech Boulevard
 Indianapolis, Indiana 46278
 Toll Free 1-888-C-FULFLO (238-5356)
 Telephone (317) 275-8300
 Fax (317) 275-8410
 http://www.parker.com

