

PRAB

Metal Scrap Conveying

SOLUTIONS AT WORK



Heavy duty intermediate drive configuration.



Standard duty end drive configuration.

Oscillating Conveyors

Horizontal transfer of stamping scrap, die cast trim and metal chips

PRAB oscillating conveyors can be specified in a wide variety of sizes and configurations and have a broad selection of enhancement options. Each is engineered for lasting performance in standard or heavy construction, as required, to fulfill each application's specific requirements. PRAB has engineered and built oscillating conveyors since its inception in 1950.

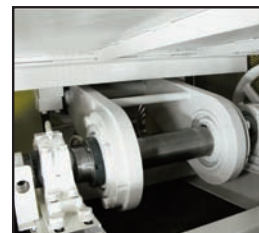
- ✓ Quiet, smooth flow
- ✓ Low maintenance
- ✓ Low cost per foot to install
- ✓ Low cost to operate
- ✓ Single drive can convey over 80 feet
- ✓ Handles, hot, dry or wet materials
- ✓ Covered by PRAB's one-year warranty



Screening and sorting configuration with side discharge chute.



Lubrication points are centrally located for easy access and maintenance.



Low maintenance eccentric drive only has 4 standard bearings.

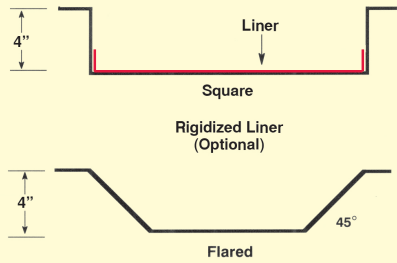


Durable multi-ply fiberglass springs provide smooth reaction and support.

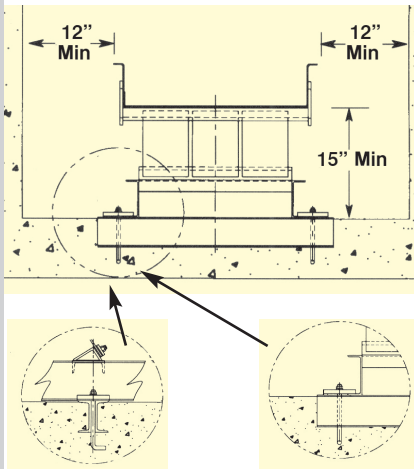


When PRAB installation and operational guidelines are followed, the equipment will perform as designed, or we will revise, repair, or make whatever changes are necessary to achieve the proper operation of the equipment.

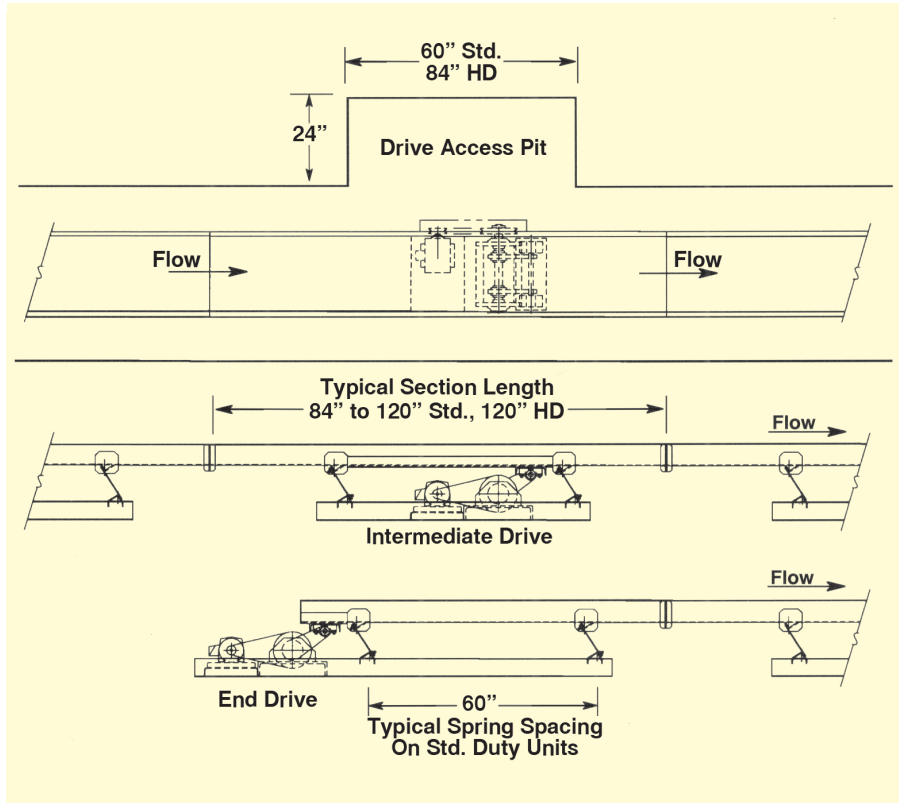
Standard Trough Configurations others are available



Installation Cross Section with anchor method details



Conveyor Drive Section



P.O. Box 2121
 Kalamazoo, MI 49003
 Phone: (269) 382-8200
 Toll Free: (800) 968-PRAB
 Fax: (269) 349-2477
 E-mail: info@prab.com
 Web: www.prab.com

Description	Standard Duty	Heavy Duty
Functional specifications		
Single drive conveyor length	To 80 feet	To 200 feet
Trough thickness	10 to 7 gauge	7 gauge or 1/4 inch
Frame base steel	Structural angle and channel	I-beam
Stroke movement	5/16" to 1/2"	3/8" to 1/2"
Conveyor widths	8" to 60"	30" to 60"
Drive section location / length	End or center / 84-120"	Center / 120"
Spring spacing down length	48" to 60" apart	84" apart
Drive	Single or double arm eccentric	Double arm eccentric
Multi-ply fiberglass reaction spring	0.20 thickness*	0.31 thickness
Bearings	Double tapered roller bearings	
Operation frequency	Adjustable from 350 to 500 cycles per minute	
Trough material and liners	Plain, rigidized or abrasion resistant steel and 1/4" Urethane	

*Stainless steel reaction spring with 0.095 thickness available for temperatures application in excess of 200°F